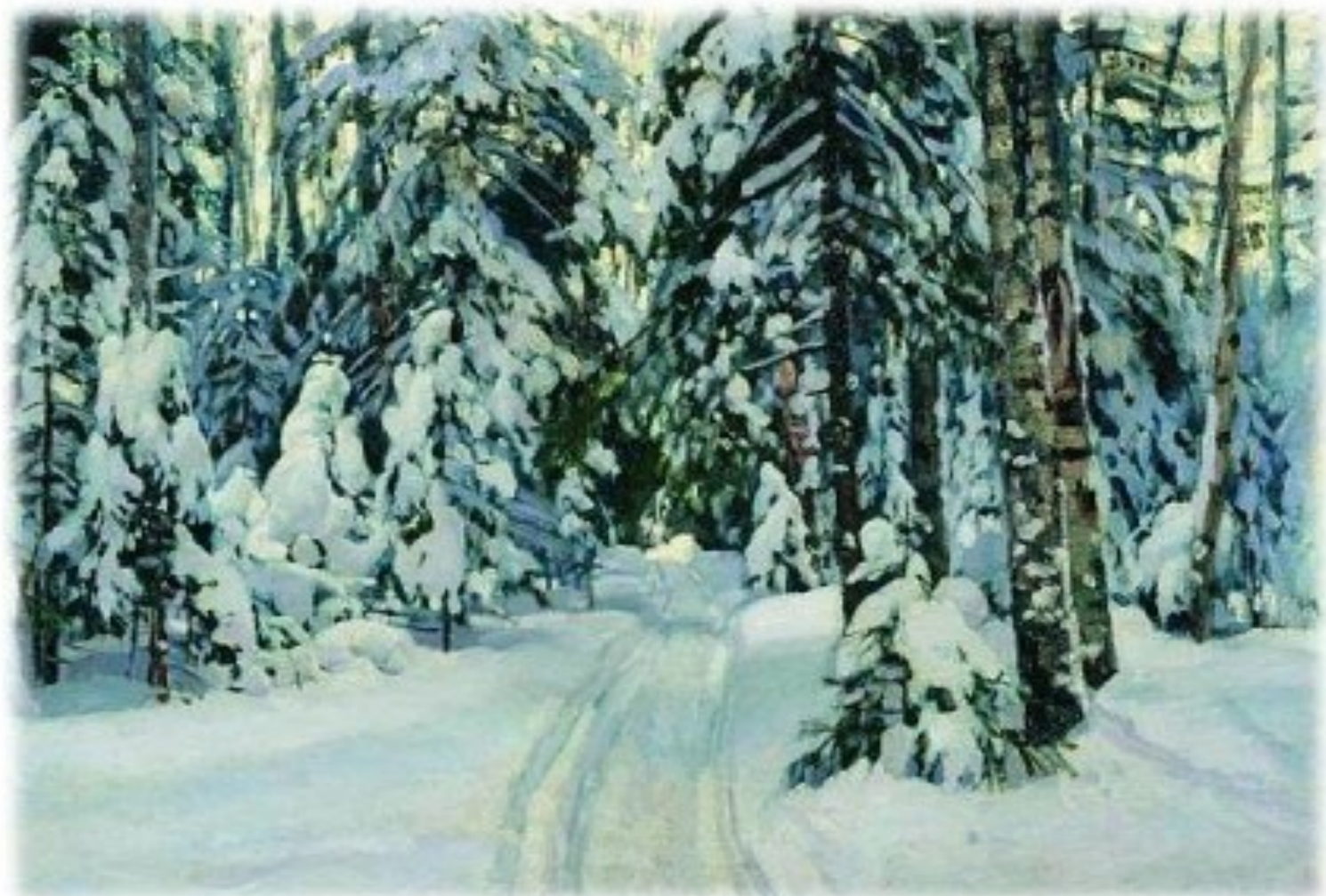


The background of the slide is a light blue and white abstract pattern. It features several large, intricate snowflake-like shapes that resemble microscopic biological structures or complex crystalline forms. These shapes are composed of fine, branching lines and small dark spots, giving them a delicate, lace-like appearance. The overall effect is a soft, wintry aesthetic.

**Зима  
глазами  
художников**

Жуковский С.Ю. Зима. 1910



1910

Степанов А.С. Зимний пейзаж. 1910



А.С. Степанов  
1910

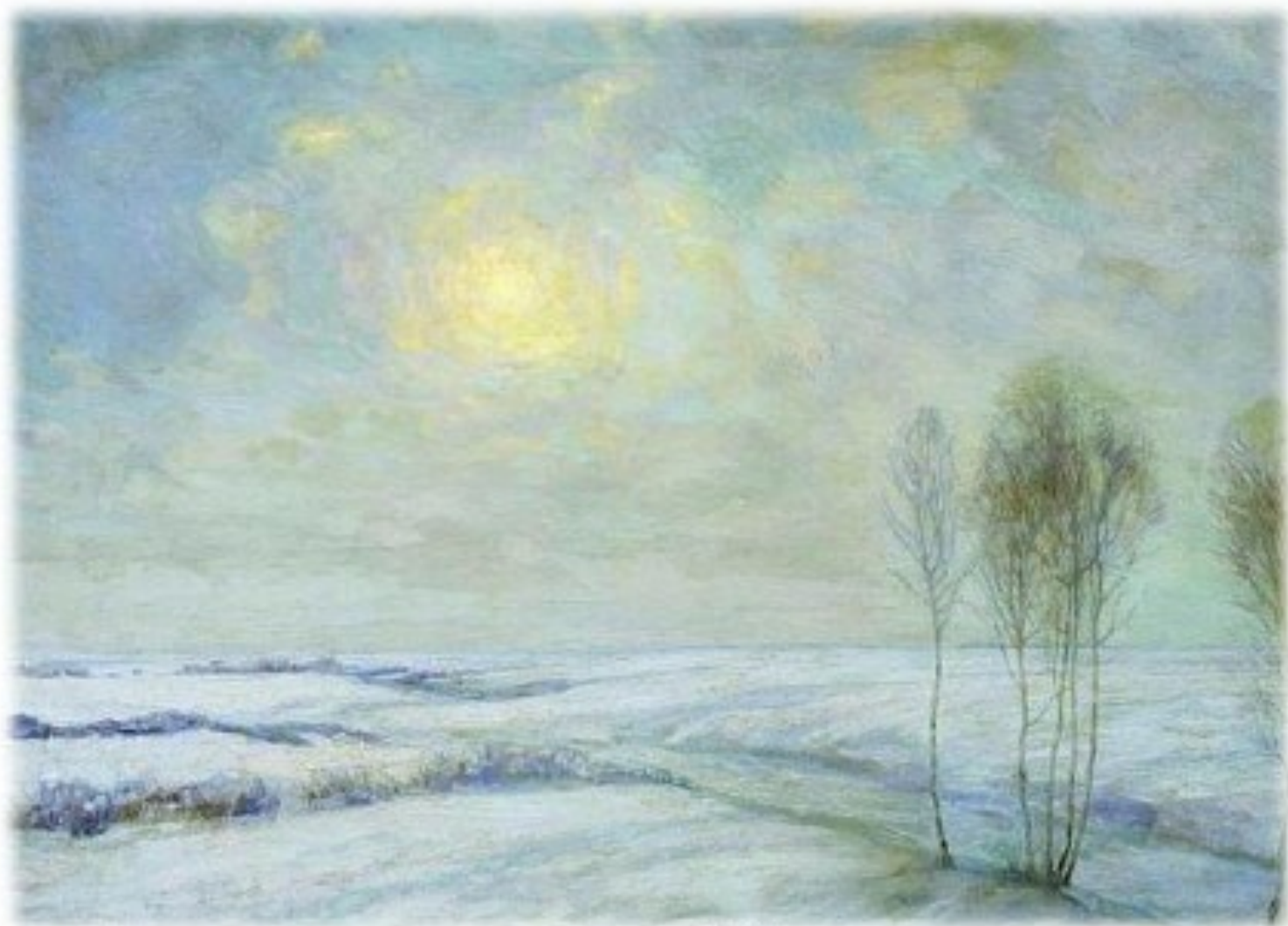
Клевер Ю.Ю. Зимний пейзаж. 1881



Саврасов А.К. Зима. Конец 1870-х-начало 1880-х



Бакшеев В.Н. Зимний пейзаж. 1909



1909

Куинджи А.И. Зима. 1890-1895



1890-1895

Васнецов А.М. Зимний сон (Зима). 1908-1914





Шишкин И.И. Зима. 1890



Шильдер А.Н. Зимний лес. 1904



А.Н. Шильдер  
1904